



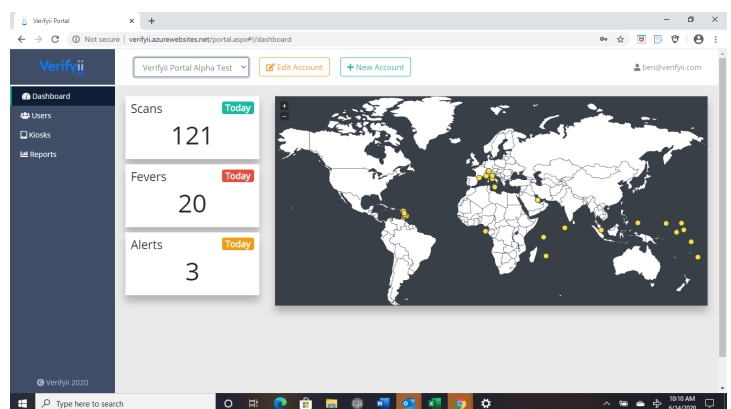
Verifyii Intelligent Identification - Helping Your Schools Open Up America Again

Verifyii Intelligent Identification's elevated body temperature (EBT) screening technology platform provides school systems with a solution that exceeds government recommendations for getting back to business. The White House has published guidelines for [Opening Up America Again](#) that school systems implement temperature checks for all phases of reopening. The CDC has provided additional guidance through its "[Schools Decision Tool](#)" that directs schools to develop and implement procedures to check for [signs and symptoms](#) of students and employees daily upon arrival," including [temperature screening](#) (p.44).

Verifyii not only provides school systems with a solution that meets screening guidelines, our EBT screening platform meets [FDA guidelines](#) for telethermographic systems by screening employees individually and implementing black body reference for high accuracy (ISO Standard TR 13154). The Verifyii EBT screening platform is both touchless and automated, meaning [safe social distancing screening guidelines](#) (p.43) are exceeded, and valuable human assets can resume their primary roles in teaching, rather than screening students and coworkers.

By developing a technology platform around EBT screening, Verifyii provides school systems with real time data, alerts and notifications that help business leaders not only screen safely and effectively - but also exceed [CDC guidance](#) to "communicate with with staff, parents and students. Coordinate with local health officials to communicate dismissal decisions and the possible COVID-19 exposure ." Verifyii's data analytics provide school systems with regular reporting that can simplify internal and external communications, helping school systems and communities safely and confidently open up again. In addition to reporting, Verifyii's EBT screening platform can easily integrate with student attendance, third party payroll, time card, HRMS and/or access control systems, seamlessly complementing existing business systems and improving efficiencies.

What happens if this all goes away? Rather than providing a simple red-light/green-light screen that may become useless - Verifyii's technology platform includes vendor and visitor management capabilities, ensuring that your school remains safer and healthier even after the pandemic. Verifyii's EBT screening platform can also provide visitor credentialing and check-in services, including background check integration, safety video/instruction, school policy acknowledgement, health/travel questionnaire, etc. By integrating with student attendance, time card and payroll systems, Verifyii's EBT screening platform can also replace existing time card and attendance systems, most of which require touch and teacher management. Regardless of COVID - fevers, flus and contagious infections can greatly disrupt your school system and Verifyii provides solutions that ensure your school safely operates in both the current reality of COVID and whatever the future might bring. Choose the best practices that businesses and health care systems are implementing across the county to safely reopen, choose Verifyii.



*the Verifyii Intelligent Identification System is not intended for, nor designed to diagnose or detect medical conditions

About the System:

Verifyii EBT System Overview: <https://youtu.be/5af38TqbgQs>



Advanced Elevated Body Temperature Screening:

highest quality, most accurate IR camera system on the market, combined with Verifyii's proprietary user interface and analytics – creating an easy to use and highly accurate screening system.

Touch-less and Automated:

Verifyii's non-contact system detects individuals as they approach the controlled area and the EBT screening is completed within 5 seconds. In accordance with Internal Organization Standardization (ISO) guidelines Verifyii controls subjects distance, only allows for one person at a time, and requires a "pause" for accurate reading (ISO/TR 13154).

Facial Recognition & HRMS Integration:

Verifyii's robust hardware and cloud database allows for seamless integration with current human resource systems. The system can be utilized for employee clock-in/clock-out, payroll, and/or visitor access. It allows for real time visibility and protection. Additional integration features include RFID badge scanning and facial recognition for touchless, automated integration – all while protecting employee personally identifiable information (PII).

Cloud Based Cellular Connectivity:

No support is needed from your IT department and no "rogue" devices are sitting on your network. The system connects via cellular to Verifyii's data management cloud, which provides customers with 24/7/365 system monitoring, all software updates and enhancements, and data analytics including alerts, notifications and trend analysis – allowing leaders to make better, more accurate and real-time decisions regarding employee health and safety.

Security and Anonymity:

Verifyii's EBT screening kiosk connects to our data management cloud over a virtual private network (VPN) established by the cellular service provider specifically for Verifyii. This means that our kiosks are not identifiable on any network, preventing any attempted hacks. Verifyii also implements SSL mutual certificate authentication. Additionally, no personally identifiable information (PII) is captured or retained by Verifyii.

Contact Tracing:

Through Verifyii's time card system, contact tracing functionality is available while employees or visitors are on site. Employees and visitors are screened on arrival and departure, so if a fever is developed while onsite, leadership can be notified and appropriate quarantine measures can be taken.

Made in the USA:

Designed and manufactured in South Carolina.

